

BENEFITS OF USING THE BLEND AND SNAP SPONGE

Using the Blend and Snap makeup sponge offers several benefits that can enhance your makeup application process and result in a flawless finish. Here are some of the key benefits of using this sponge:

- 1. Durability:** The Blend and Snap sponge is constructed with stitched edges, ensuring long-lasting durability. Unlike other sponges that may tear or fall apart easily, the stitched design of this sponge provides additional strength, allowing you to use it for an extended period without worrying about it deteriorating.
- 2. Seamless Blending:** The unique design of the Blend and Snap sponge allows for effortless blending of liquid and cream products. Its soft, microfiber texture enables you to seamlessly blend foundation, concealer, and other products into your skin, creating a smooth and even finish.
- 3. Minimizes Product Wastage:** The Blend and Snap sponge minimizes product wastage. It has a non-absorbent surface, meaning that less foundation or other liquid products are absorbed into the sponge, allowing you to use less product to achieve the desired coverage.
- 4. Versatility:** The Blend and Snap sponge is versatile and can be used with different types of makeup products. Whether you're applying liquid foundation, cream blush, or even setting powder, this sponge can be used to seamlessly blend and distribute the product on your skin for a flawless finish.
- 5. Easy to Use:** The Blend and Snap sponge is user-friendly and easy to use, making it ideal for both beginners and experienced makeup users. Its shape and texture allow for precise application in hard-to-reach areas, such as around the nose and eyes. You can easily control the amount of product and achieve the desired coverage with a few gentle taps or bounces.
- 6. Airbrushed Finish:** When used correctly, the Blend and Snap sponge can help create an airbrushed effect on your skin. The stippling motion of the sponge helps to evenly distribute the product, ensuring a seamless and natural finish that looks professionally done.



01

CHAPTER

WHAT IS THE BLEND AND SNAP MAKEUP SPONGE?

The Blend and Snap makeup sponge is a popular beauty tool known for its unique design and functionality. It is a versatile sponge that is commonly used for applying and blending different types of makeup products, including liquid foundation, cream products, and even powders.

What sets the Blend and Snap makeup sponge apart is its special feature that allows it to evenly distribute and blend makeup without absorbing excessive product. The Blend and Snap sponge minimizes product wastage and ensures a smoother application.

The sponge has a soft, microfiber texture that offers a seamless, airbrushed finish when used correctly. Its shape typically includes a rounded bottom for larger areas of the face, such as cheeks and forehead, and a tapered tip for precise application around the nose, eyes, and other smaller areas.

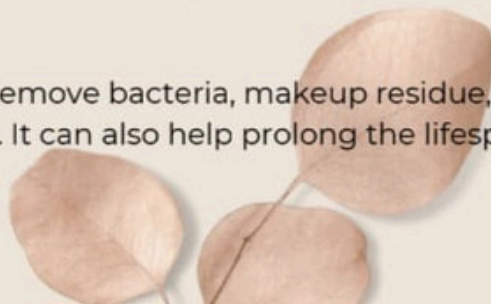


HOW TO PROPERLY CLEAN AND CARE FOR YOUR BLEND AND SNAP SPONGE

Proper cleaning and caring for your Blend and Snap sponge is essential to maintain its hygiene and prolong its lifespan. Here is a step-by-step guide on how to clean and care for your sponge effectively:

1. **Rinse the sponge:** Start by rinsing the sponge under warm running water. Squeeze it gently to remove any excess makeup or residue.
2. **Use a gentle cleanser:** Apply a small amount of mild soap or gentle cleanser to your palm or directly onto the sponge. You can also use a specialized makeup sponge cleanser. Make sure the cleanser is suitable for use on cosmetic sponges.
3. **Cleanse the sponge:** Gently massage the sponge in a circular motion to work the cleanser into the sponge and remove any makeup buildup. Pay attention to all areas of the sponge, including the surface and the crevices.
4. **Rinse thoroughly:** Rinse the sponge under warm water until all cleanser residue is gone. Continue squeezing and rinsing until the water runs clear and the sponge appears clean.
5. **Squeeze out excess water:** Gently squeeze the sponge to remove excess water. Avoid twisting or wringing it, as that can damage the sponge's shape and texture.
6. **Air dry:** Place the sponge in a well-ventilated area and allow it to air dry completely. Avoid leaving it in damp or humid environments as that can lead to mold or bacteria growth. You can also use a clean towel or sponge holder to hold the sponge while it dries.
7. **Clean regularly:** It is recommended to clean your Blend and Snap sponge after each use to maintain hygiene. However, the cleaning frequency may vary based on personal preference and individual usage patterns. Some individuals may find it necessary to clean their sponge after every use, while others may clean it less frequently, depending on factors such as the amount of product used and personal hygiene preferences.

Cleaning your sponge regularly can help remove bacteria, makeup residue, and oils, ensuring a clean and hygienic application every time. It can also help prolong the lifespan of the sponge and maintain its performance.



02

CHAPTER

PREPPING YOUR CANVAS

UNDERSTANDING YOUR SKIN TYPE AND TONE

Understanding your skin type and skin tone is important when it comes to choosing the right skincare products and makeup shades that will work best for you. Here is a breakdown of each:

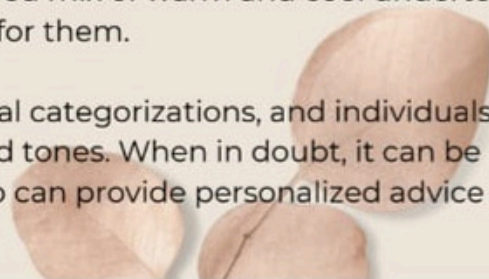
Skin Types:

1. **Normal Skin:** Characterized by balanced oil production, normal skin has a good balance of moisture and is not prone to excessive dryness or oiliness. Pores are usually small and skin texture is smooth.
2. **Dry Skin:** Dry skin tends to lack moisture and often feels rough, tight, or flaky. It may have visible fine lines and wrinkles, and pores can appear smaller. Dry skin can benefit from hydrating and nourishing skincare products.
3. **Oily Skin:** Oily skin produces more sebum, making the skin appear shiny and sometimes greasy. Pores are usually larger and more prone to clogging, leading to issues like acne and blackheads. Oil-control and mattifying products can be helpful for managing oily skin.
4. **Combination Skin:** Combination skin is a mix of oily and dry areas. The T-zone (forehead, nose, and chin) tends to be oilier, while the cheeks may be drier. Combination skin requires a balance of hydration and oil control.
5. **Sensitive Skin:** Sensitive skin is easily irritated and reactive. It can be prone to redness, itching, and other signs of sensitivity. Gentle, fragrance-free products are usually recommended for sensitive skin.

Skin Tones:

1. **Fair or Light:** This skin tone typically has lighter undertones and may burn easily in the sun. Shades like ivory, light beige, and porcelain often suit fair or light skin tones.
2. **Medium:** Medium-toned skin usually has a mix of warm and cool undertones. Shades like golden, tan, or olive tones work well for this skin tone.
3. **Deep or Dark:** Deep or dark skin tones have rich, deeper undertones. Shades like cocoa, deep caramel, and ebony are often suitable for this skin tone.
4. **Neutral:** Neutral skin tones have a balanced mix of warm and cool undertones. They can often find that a wide range of shades work well for them.

It is important to note that these are general categorizations, and individuals may have unique combinations or variations of skin types and tones. When in doubt, it can be helpful to consult with a beauty professional or dermatologist who can provide personalized advice based on your specific needs..



FOUNDATION AND CONCEALER TECHNIQUES

ACHIEVING A FLAWLESS COMPLEXION

If you want to achieve a flawless complexion, the Blend and Snap Sponge is a must-have tool in your makeup collection. Here's why this sponge is so popular among makeup enthusiasts and how to use it effectively:

- 1. Seamless Blending:** The Blend and Snap Sponge is designed to effortlessly blend your foundation, concealer, and other complexion products into your skin. Its unique shape and texture allow for seamless blending, creating an airbrushed look.
- 2. Versatility:** This sponge can be used for multiple steps in your makeup routine. Use the rounded bottom for applying and blending foundation, the pointed end for precise concealer application, and the flat edge for contouring or applying powder.
- 3. Buildable Coverage:** With the Blend and Snap Sponge, you have control over the coverage level you want to achieve. By dampening the sponge, you can sheer out your products for a more natural finish. If you prefer heavier coverage, use the sponge dry for a more concentrated application.
- 4. Even Product Distribution:** The sponge helps distribute products evenly across your skin, preventing any cakey or patchy appearance. It blends seamlessly without leaving streaks or lines, resulting in a smooth and flawless complexion.



HERE'S HOW TO USE THE BLEND AND SNAP SPONGE EFFECTIVELY:

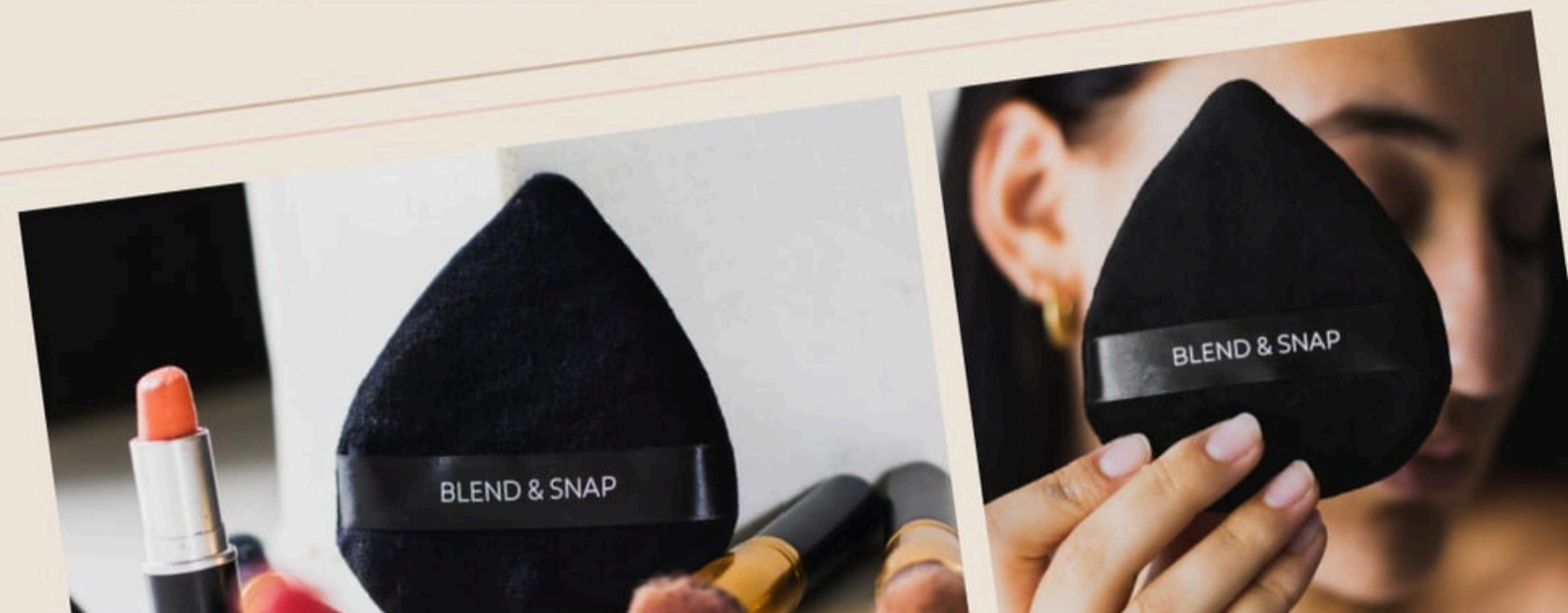
The Blend and Snap Sponge should be used dry for better coverage and control over the application of complexion products. However, spritzing the sponge with a facial mist or a setting spray can be done to dampen it slightly, enhancing the blending and seamless application of products.

1. Apply the product: Dispense a small amount of foundation or concealer onto the back of your hand or a palette. Dip the rounded bottom of the sponge into the product and start applying it to your face in a bouncing or stippling motion. This technique helps to blend the product seamlessly.

2. Blend and build: Continue bouncing the sponge over your skin, focusing on areas where you need more coverage or want to achieve a smoother finish. Use the pointed end to blend concealer under the eyes, around the nose, or on blemishes.

3. Set with powder (optional): If desired, you can use the flat edge of the sponge to apply setting powder to lock in your foundation and prevent any unwanted shine. Gently press the powder onto your skin for a flawless and long-lasting finish. (To ensure an even cake-free application, you can first press the flat edge onto the back of your hand to evenly distribute the powder before gently pressing it onto your face)

Remember, practice makes perfect with the Blend and Snap Sponge. Experiment with different techniques and pressures to find the application method that works best for you and your desired coverage level.



BLENDING LIQUID AND CREAM FOUNDATIONS SEAMLESSLY

To achieve a seamless blend with liquid and cream foundations, here are some steps you can take:

1. Start with a clean and moisturized face: Ensure that your skin is clean and properly hydrated before applying any foundation. This helps create a smooth canvas for an even application.
2. Prepping with a primer: Apply a thin layer of primer before foundation to create a smooth surface and help your foundation adhere better to the skin. This can also help prolong the wear of your foundation.
3. Dotted or swiping foundation: With a small amount of foundation on the back of your hand or directly on your face, use your fingertips, a brush, or the Blend and Snap Sponge to dot or swipe the foundation onto your skin.
4. Blending with a sponge: If using the Blend and Snap Sponge, gently bounce or stipple the sponge over the foundation, blending it outwards towards the hairline and jawline. The sponge's soft texture helps achieve a seamless application by evenly distributing the product on the skin.
5. Building coverage: Depending on your desired coverage, you can layer and blend additional foundation where needed. Use the sponge to press and blend the foundation into the skin, ensuring an even and natural-looking finish.
6. Set with powder (optional): If desired, after blending the foundation, you can use the flat edge of the Blend and Snap Sponge to apply a light dusting of setting powder. This helps to set the foundation and prevent any excess shine.

Remember to blend the foundation thoroughly, especially around the edges to avoid any harsh lines. Take your time and work in thin layers for a seamless and natural finish.

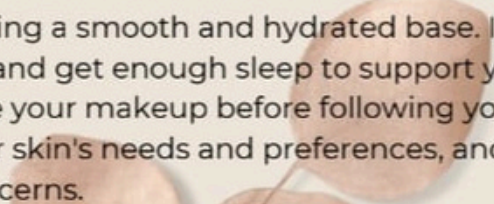


SKINCARE ROUTINE FOR A SMOOTH AND HYDRATED BASE

To achieve a smooth and hydrated base for your skin, here's a suggested skincare routine:

- 1. Cleansing:** Start with a gentle cleanser that suits your skin type. Massage it onto damp skin, then rinse thoroughly with lukewarm water to remove dirt, impurities, and excess oil. Pat your skin dry with a clean towel.
- 2. Toning:** Apply a toner to help rebalance your skin's pH levels and prepare it for better absorption of skincare products. Look for alcohol-free toners that are suitable for your skin type. Gently pat the toner onto your skin using clean hands or a cotton pad.
- 3. Exfoliation:** Exfoliate your skin 1-2 times a week to remove dead skin cells and promote a smoother texture. Opt for a gentle exfoliator suitable for your skin type and massage it in circular motions. Rinse it off with lukewarm water and pat dry.
- 4. Serum or Essence:** Apply a hydrating serum or essence to provide an extra boost of moisture to your skin. Look for ingredients like hyaluronic acid or ceramides, which help to retain moisture and improve skin elasticity. Gently pat the product onto your skin.
- 5. Moisturizer:** Pick a moisturizer that is suitable for your skin type. Opt for a lightweight, non-comedogenic (non-pore-clogging) formula for oily or combination skin, and choose a richer, creamier moisturizer for dry skin. Apply it all over your face and neck, gently massaging it into your skin.
- 6. Eye Cream:** Apply an eye cream specifically formulated for the delicate skin around your eyes. Gently dab small dots of the eye cream around your orbital bone and gently pat it in using your ring finger.
- 7. Sunscreen:** Protect your skin from harmful UV rays by applying sunscreen on a daily basis, even if you're indoors. Choose a broad-spectrum sunscreen with SPF 30 or higher and apply it as the last step of your skincare routine. Reapply every few hours if you're exposed to the sun for an extended period of time.

Remember, consistency is key in maintaining a smooth and hydrated base. It's also important to drink plenty of water, eat a balanced diet, and get enough sleep to support your skin's health from within. Additionally, don't forget to remove your makeup before following your skincare routine in the evening. Adjust these steps as per your skin's needs and preferences, and consult with a dermatologist if you have specific skin concerns.



ENHANCING YOUR FEATURES WITH EXPERT HIGHLIGHTING TECHNIQUES

1. Choose a highlighter: Select a highlighter that suits your skin tone and desired finish. Powder highlighters or cream/liquid highlighters both work well with the sponge.
2. Apply the highlighter: Take a small amount of highlighter on the sponge by dabbing or swirling it onto the rounded edge. Lightly tap or bounce the sponge onto the areas you want to highlight, such as the cheekbones, brow bone, nose, cupid's bow, and inner corners of the eyes.
3. Blend softly: After applying the highlighter, use the clean side of the Blend and Snap Makeup Sponge to softly blend the product into the skin. Use a bouncing motion to gently blend any harsh lines or edges for a natural and seamless finish.
4. Check in natural light: As always, check your makeup in natural light to ensure the highlight appears natural and well-blended. This allows you to make any necessary adjustments or touch-ups.



PRIMER: THE SECRET TO LONG-LASTING MAKEUP APPLICATION

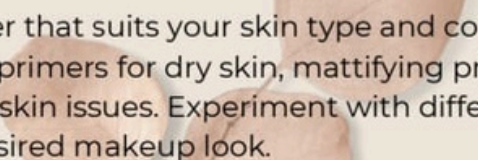
To achieve long-lasting makeup application, using a primer before applying your makeup is indeed a game-changer. Here's all you need to know about the benefits of using a primer and how to incorporate it into your routine:

- 1. Smooths the Skin:** Primers create a smooth base for your makeup by filling in pores, fine lines, and uneven textures. This creates a more even canvas, allowing your foundation to glide on seamlessly.
- 2. Extends Makeup Wear:** Primers are formulated to help your makeup last longer throughout the day by providing a barrier between your skin and makeup. They help to prevent your foundation, concealer, and other products from breaking down, smudging, or becoming patchy throughout the day.
- 3. Minimizes Oiliness and Controls Shine:** If you have oily skin, using a mattifying primer can help control excess oil production and keep your skin shine-free for longer periods. Look for primers with oil-absorbing ingredients like silica or kaolin clay to mattify the skin.
- 4. Enhances Makeup Application:** Primers can also enhance the application and performance of specific makeup products. For example, using an eyeshadow primer can prevent creasing and improve the vibrancy and longevity of your eyeshadows.

Here's how to incorporate a primer into your makeup routine:

- 1.** After completing your skincare routine, wait a few minutes for your moisturizer to fully absorb into the skin.
- 2.** Take a small amount of primer onto your fingertips or a makeup brush and apply it onto the areas where you want to smooth out texture, fill in pores, or control shine. This is typically the T-zone (forehead, nose, and chin).
- 3.** Gently massage the primer into the skin using upward, circular motions.
- 4.** Allow the primer to dry and set for a minute or two before proceeding with your makeup application.
- 5.** Apply your foundation, concealer, and other makeup products as usual, taking note of the smoother and longer-lasting effect the primer provides.

Remember, it's important to choose a primer that suits your skin type and concerns. There are various types available, including hydrating primers for dry skin, mattifying primers for oily skin, and color-correcting primers to address specific skin issues. Experiment with different primers to find the one that works best for you and your desired makeup look.



CONCEALING BLEMISHES, DARK CIRCLES, AND IMPERFECTIONS EFFORTLESSLY

To effortlessly conceal blemishes, dark circles, and imperfections, consider the following steps:

1. **Prep your skin:** Cleanse and moisturize your face before applying any concealer. This helps create a smooth base and ensures better adherence of the product.
2. **Choose the right shade:** Select a concealer shade that matches your skin tone or is slightly lighter to brighten the area. Matching the shade helps the concealer blend seamlessly with your foundation.
3. **Spot application:** Using the wand applicator or a small concealer brush, apply the concealer directly onto the blemish, dark circle, or imperfection. Dab a small amount and gradually build up to avoid applying too much product at once.
4. **Blend it in:** Using the edge of the Blend and Snap Sponge, gently blend the concealer into the skin. Patting or pressing motions are ideal, as they help the product melt into the skin and achieve a more natural finish.
5. **Set with powder (optional):** If needed, you can set the concealer with a light dusting of translucent powder. This will ensure longer wear and prevent creasing.
6. **Layer and repeat if necessary:** For particularly stubborn imperfections, you can repeat the application process in thin layers. Be mindful not to overload the area with excessive product, as it may look cakey or emphasize texture.
7. **Luminizing touch (optional):** If you prefer a more dewy or radiant finish, you can add a touch of highlighter or a luminizing concealer on top of the concealed areas. This can help bring brightness to the skin and give a natural glow.

Remember to blend the edges of the concealed area with the surrounding skin for a seamless finish. Take your time and use a light hand, building coverage gradually for the most effortless concealment.



FLAWLESS CHEEKS AND CONTOURED JAWLINE

BLUSH APPLICATION TECHNIQUES

1. Powder blush application:

Dip the rounded edge of the dry Blend and Snap Makeup Sponge into your chosen powder blush. Pick up a small amount of product to start and tap off any excess.

Lightly dab or bounce the sponge onto the apples of your cheeks, starting from the center and blending outward towards the hairline.

Use light tapping or bouncing motions to blend the blush into the skin for a natural and seamless finish.

Continue building up the color as desired, adding more blush to the sponge and repeating the application process until you achieve your desired intensity.

2. Cream or liquid blush application:

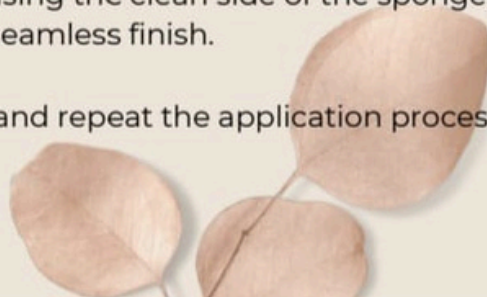
Squeeze a small amount of your cream or liquid blush onto the back of your hand.

Dip the rounded edge of the dry Blend and Snap Makeup Sponge into the product, making sure to pick up a small amount.

Apply the blush to the apples of your cheeks using gentle dabbing or bouncing motions, just like with powder blush.

Blend the blush into your skin using the clean side of the sponge, using soft bouncing motions to ensure a seamless finish.

Add more blush to the sponge and repeat the application process as needed to build up the color.



SETTING YOUR MAKEUP FOR A LONG-LASTING FINISH

To set your makeup for a long-lasting finish using the Blend and Snap Makeup Sponge, follow these steps:

1. After applying your foundation, concealer, and any cream or liquid products, lightly dust a setting powder over your face using the sponge.
2. Gently tap the rounded edge of the dry Blend and Snap Makeup Sponge into the setting powder, picking up a small amount of product. Tap off any excess powder to avoid applying too much at once.
3. Starting from the center of your face and working outwards, press and roll the sponge onto your skin in a gentle patting motion. This helps to press the powder into your makeup, ensuring maximum longevity.
4. Pay extra attention to areas where your makeup tends to wear off quickly, such as the T-zone (forehead, nose, and chin). Use the tip of the sponge to press and roll the powder onto these areas for added staying power.
5. Continue to set the rest of your face by applying the setting powder with the Blend and Snap Makeup Sponge, making sure to blend it seamlessly into your foundation and other products.
6. If needed, use the flat side of the sponge to gently press and roll any excess powder away, ensuring a natural-looking finish.

Setting your makeup with a setting powder and using the Blend and Snap Makeup Sponge helps to absorb excess oils and prolong the wear of your foundation and other products. The sponge's soft texture allows for a seamless application, ensuring that the powder sets your makeup without disturbing the finish or texture of your foundation.



**Request more info or place
your orders with**

Storm

072 775 0325

www.wstkcreations.co.za